

# SmartEdge MT4 EA — Quick Start & Implementation Guide (v1.0)

---

Brand: SmartEdge Trading

Tagline: Stress-free, disciplined trading.

Platform: MetaTrader 4 (MT4)

Last updated: 24 Sept 2025



## 1) Before you start (what you'll need)

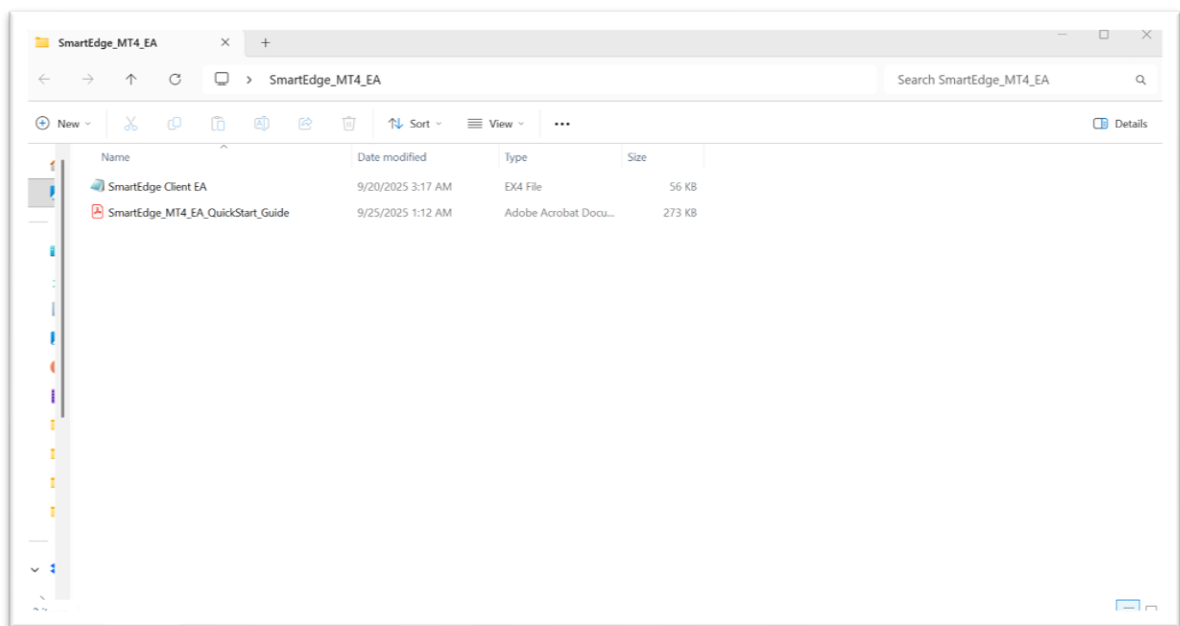
- MetaTrader 4 terminal from your broker, installed on Windows (PC or VPS).
- Stable internet (recommended 10+ Mbps) & uninterrupted power (VPS preferred).
- Your SmartEdge EA license key (account-bound).
- Broker account with reasonable spreads/commissions.
- Optional: Myfxbook login if you want public verification.

### SmartEdge EA Flow — Section 1 Overview



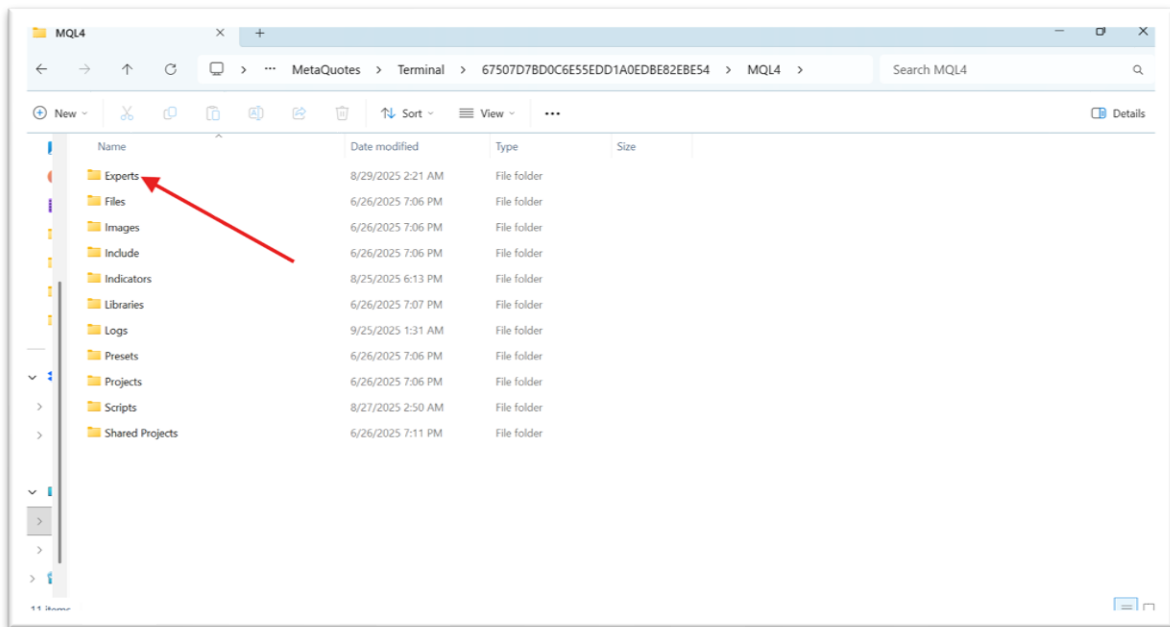
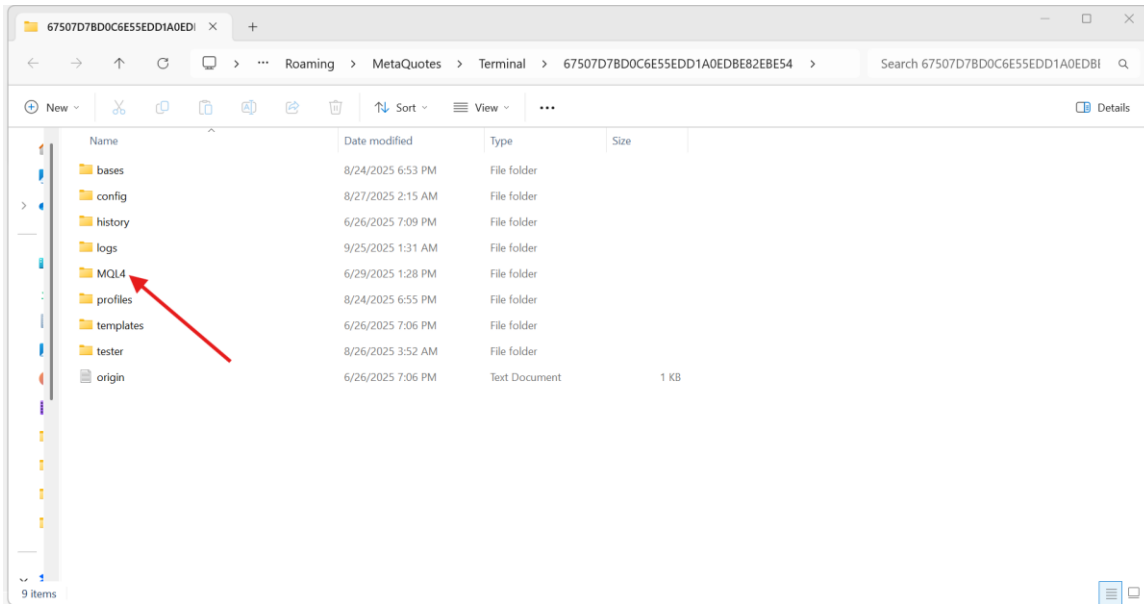
## 2) What's included in your delivery

- SmartEdge\_EA.ex4 (the Expert Advisor file)
- PDF guide (this document)
- Links: Telegram community, Myfxbook verification



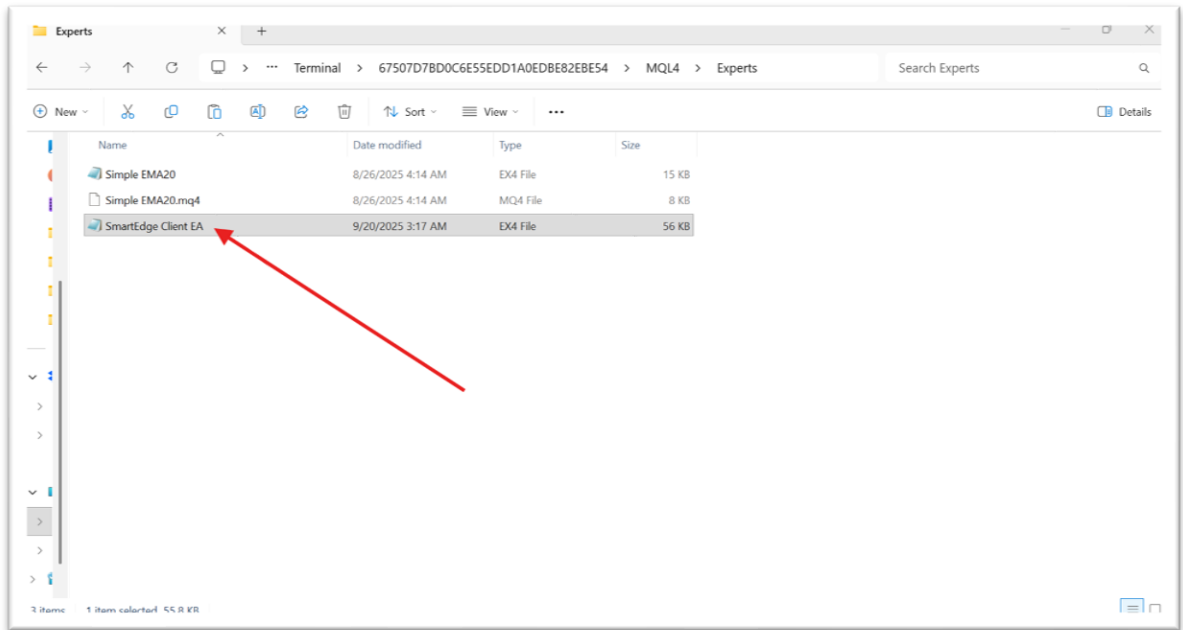
### 3) Install MT4 + prepare folders

- Install and open MT4.
- Go to File → Open Data Folder.
- Navigate to MQL4/Experts.



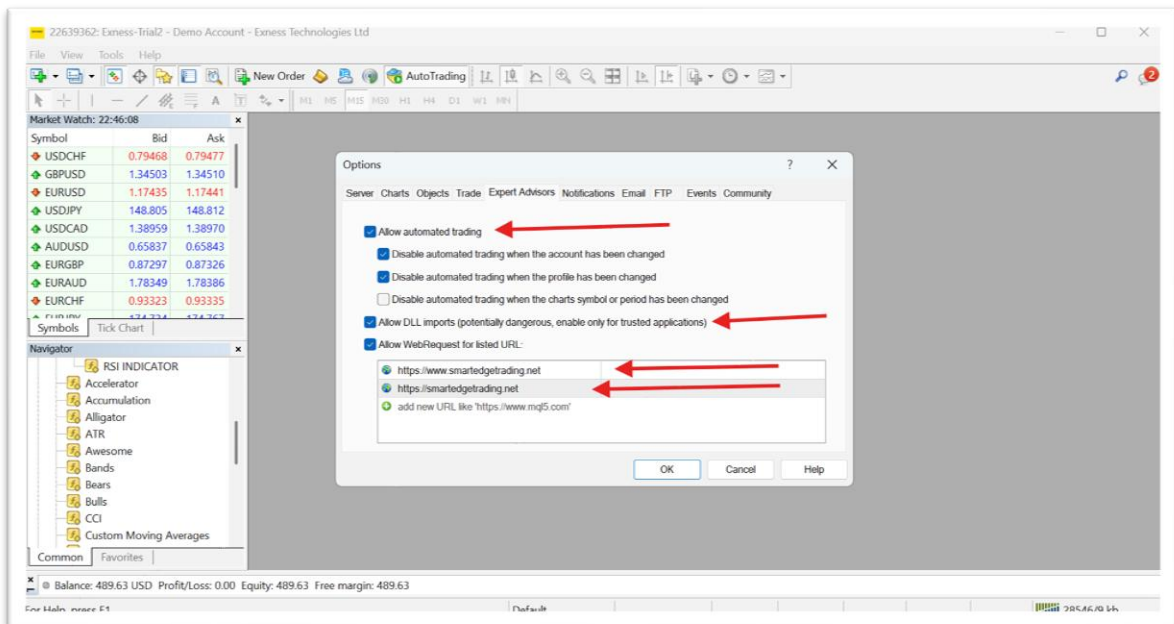
#### 4) Install the EA (.ex4) into MT4

- Copy SmartEdge\_EA.ex4 into MQL4/Experts.
- Restart MT4 or right-click Experts in Navigator → Refresh.



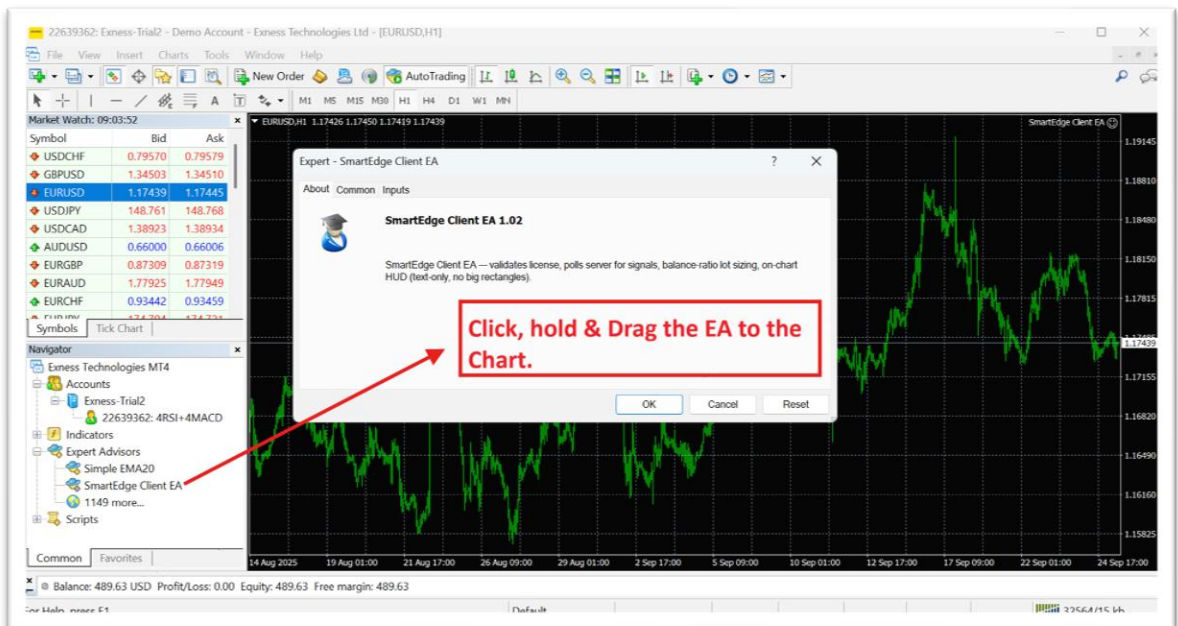
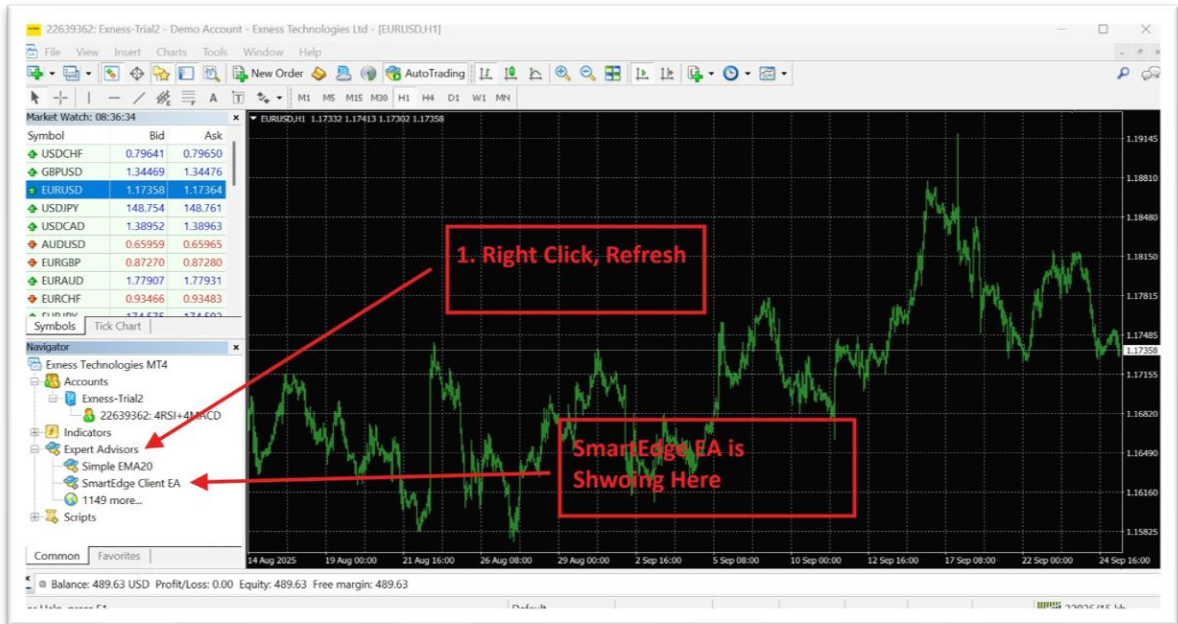
#### 5) Enable automated trading & DLL in MT4

- Tools → Options → Expert Advisors.
- Tick Allow automated trading.
- Tick Allow DLL imports (no confirmation).
- Allow WebRequests and add links: <https://smartedgetrading.net> and <https://www.smartedgetrading.net>
- Ensure Auto Trading button is green.



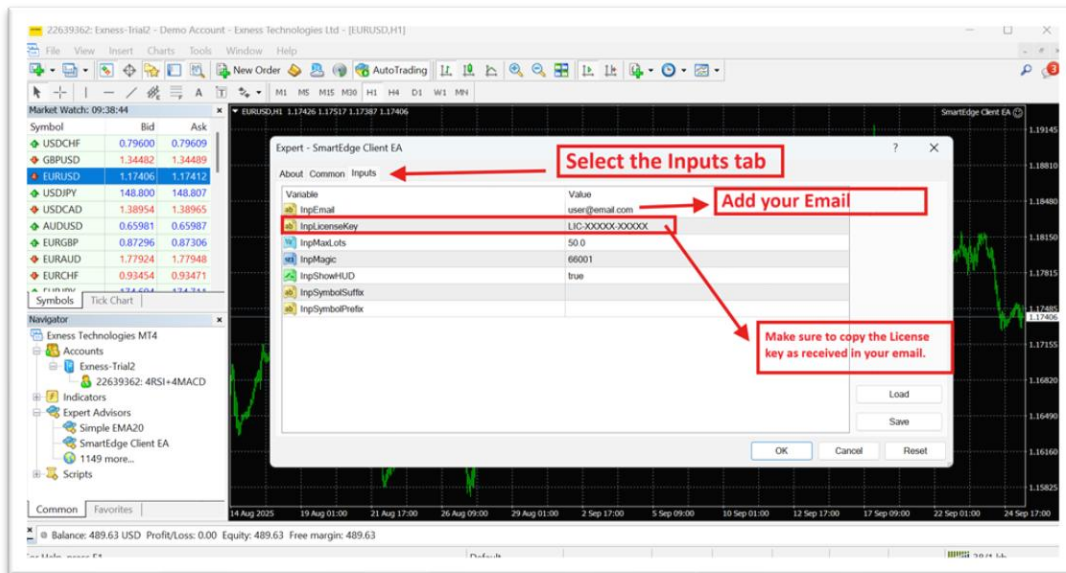
## 6) Attach the EA to a chart (single or multi-pair)

- Open a chart (e.g., EURUSD M1).
- Drag SmartEdge\_EA onto the chart from Navigator → Experts.
- Configure Inputs (see Sections 7–9).
- Click OK — you should see a smiley face in chart corner.
- The EA dashboard will appear after successful connection.
- EA will auto trade multiple pairs.



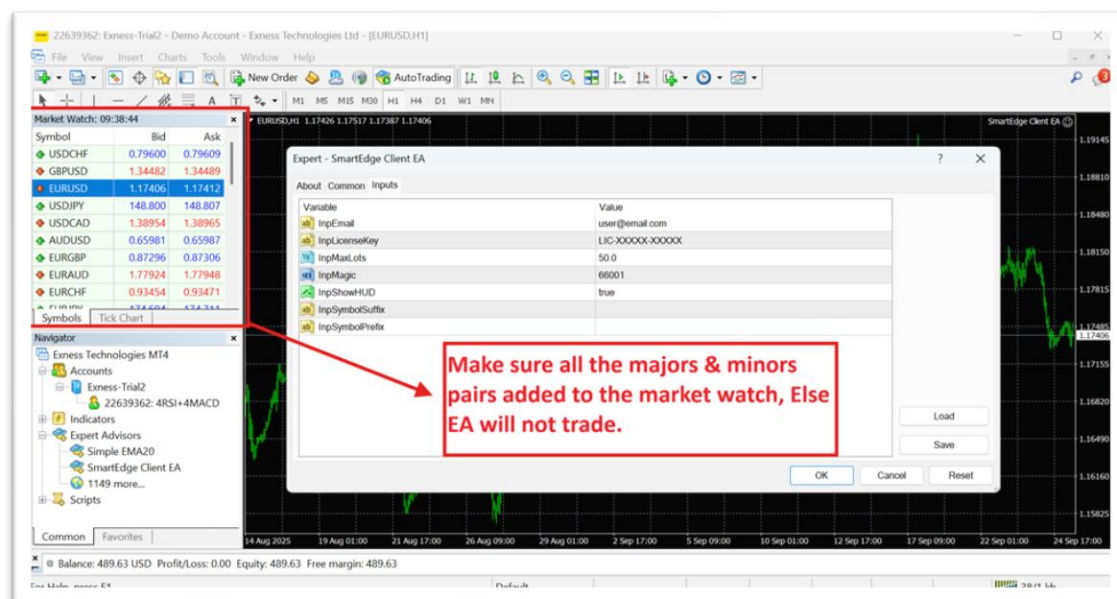
## 7) Enter your license key

- Paste your LicenseKey exactly as provided.
- License is bound to your MT4 account number.
- Ensure system time and internet are correct.



## 8) Add all forex pairs to Market Watch

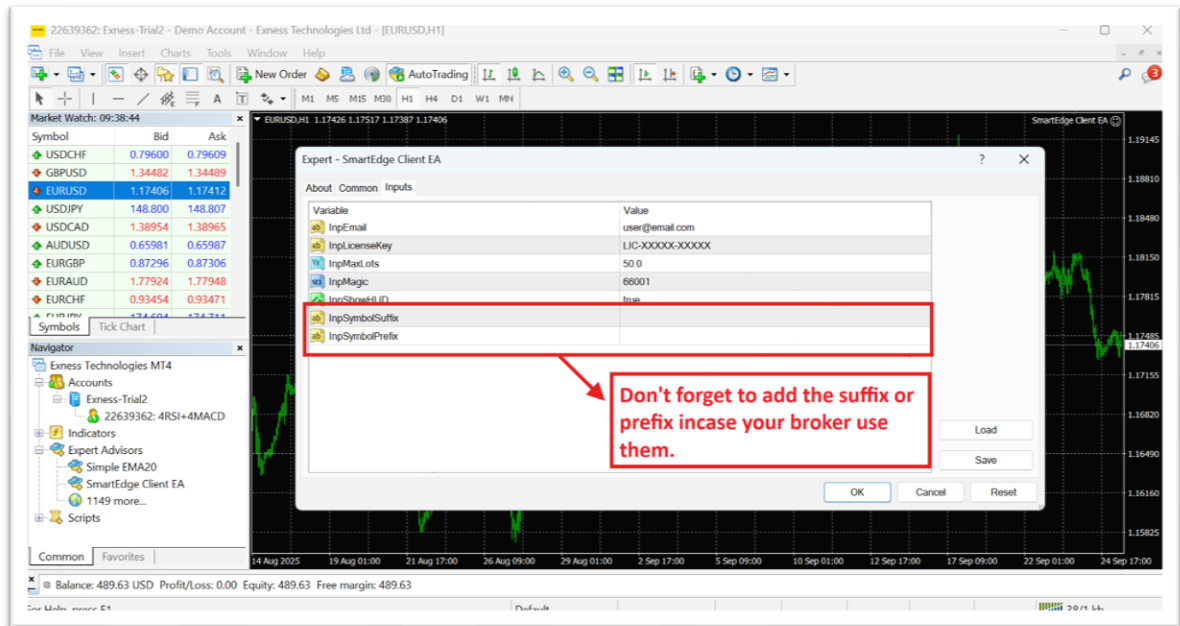
- Open Market Watch (Ctrl+M).
- Right-click → Show All.
- Ensures all tradable forex symbols are visible.
- Tip: These pairs should be visible in Market Watch: "EURUSD", "GBPUSD", "USDJPY", "USDCHF", "AUDUSD", "NZDUSD", "USDCAD", "EURGBP", "EURAUD", "EURNZD", "EURCAD", "EURCHF", "EURJPY", "GBPJPY", "GBPCHF", "GBPAUD", "GBPNZD", "GBPCAD", "AUDJPY", "AUDCHF", "AUDNZD", "AUDCAD", "NZDJPY", "NZDCHF", "NZDCAD", "CADJPY", "CADCHF", "CHFJPY".





## 9) Key inputs explained

- Email — for notifications/validation.
- License — paste your license key.
- Max Lots — maximum lot size allowed.
- Show HUD — enable on-chart Heads-Up Display.
- Suffix/Prefix — enter broker suffix or prefix (e.g., EURUSDm → suffix m).



## 10) Best-practice setup on a VPS (24/5)

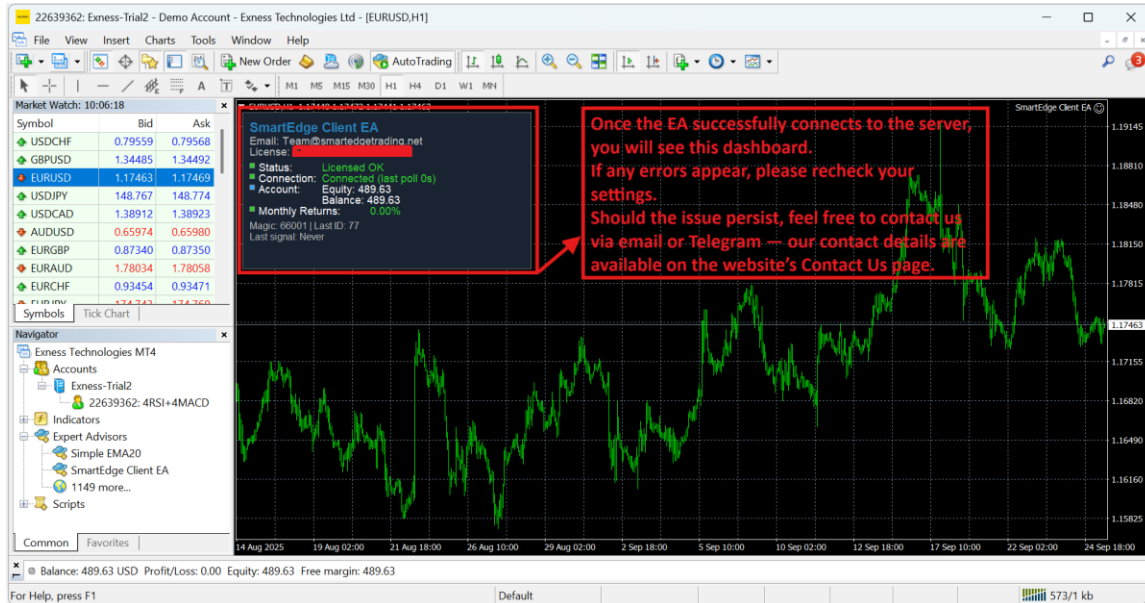
- Rent Windows VPS near broker.
- Install MT4, disable sleep/updates.
- Allow MT4 in Firewall, one MT4 instance per account.
- Enable auto-login for Windows.

## 11) Login to MT4 mobile app & check profits

- Download MT4 from App Store or Google Play.
- Login to existing account with broker name, account number, and password.
- Tap Trade to view open trades.
- Tap History to view profits and account history.

## 12) Live monitoring & Myfxbook

- Monitor Experts and Journal tabs in MT4.
- Check verified Myfxbook link for performance.
- Target 5–8% monthly returns (not guaranteed).



## 13) Troubleshooting checklist

- No trades? Check AutoTrading, DLL, license, suffix/prefix.
- Validation fails? Confirm MT4 account number, internet OK.

## 14) Support & contacts

- Telegram: <https://t.me/smartedgetrading>
- Website: [smartedgetrading.net](https://smartedgetrading.net)
- Email: [team@smartedgetrading.com](mailto:team@smartedgetrading.com)